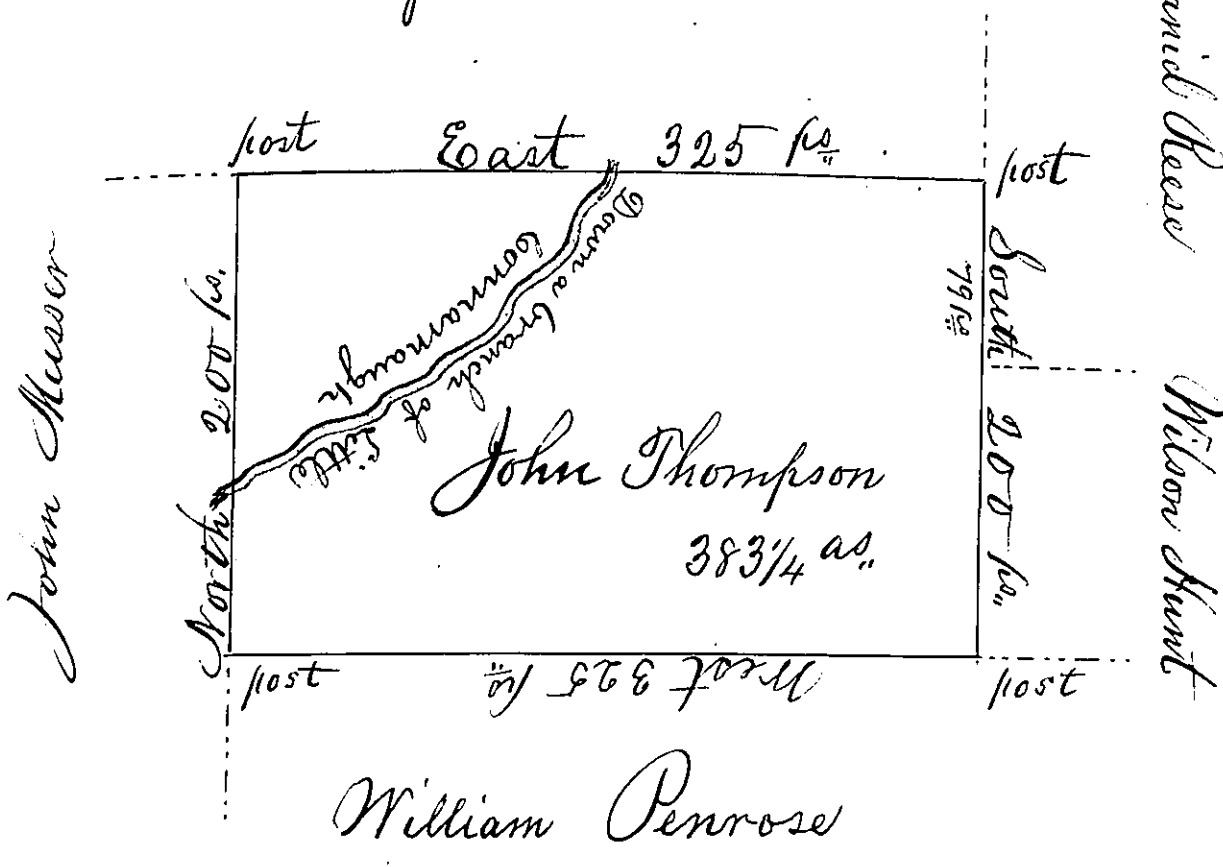


Hugh Roberts



William Penrose

Situate on the waters of the South branch of Little Conemaugh in Lucmahoning Township, Somerset County, containing 383 1/4 acres & the usual allowance of six per cent for roads &c. Surveyed August 29<sup>th</sup> 1749. Resurveyed April 29<sup>th</sup> 1801 for John Thompson on warrant dated March 10<sup>th</sup> 1794.

To Samuel Cochran Esquire  
Surveyor General

John McLean, Deputy.

IN TESTIMONY that the above is a copy of the original remaining on file in the Department of Internal Affairs of Pennsylvania, made conformably to an Act of Assembly approved the 16th day of February, 1833, I have hereunto set my Hand and caused the Seal of said Department to be affixed at Harrisburg, this

Fifth day of March 1834.

J. Simpson Africa,  
Secretary of Internal Affairs